



Banyan Tree Realty

Site Address

46 Banyan tree
Gat no 135, 136, 137
Pachane Road Chandkhed,
Taluka Maval.
Pune - 410506

☎ +91-7026996600

✉ sales@banyantreerealty.in

🌐 46banyantree.in



46 BANYAN TREE



An architectural rendering of an outdoor amphitheatre. The scene is set in a lush, green environment with numerous trees and flowering plants. In the foreground, there are concrete planters filled with various green and yellow plants. A paved walkway leads towards the amphitheatre. The amphitheatre itself features tiered concrete seating and a stage area with a simple metal frame. In the background, a modern building with large windows is visible through the trees. The overall atmosphere is bright and inviting, suggesting a high-quality living environment.

Experience a heavenly and an exquisite joy of living.

Architectural rendition of Amphitheatre.



Architectural rendition of Piazza.

SOOTHING. SUBLIME. STUNNING.

Your living spaces are scintillating and spacious, and enables you to honour the special relation we have with nature.

Welcome to 46 Banyan Tree,
a tribute to the precious gifts of nature.



Architectural rendition of Layout.

ABOUT

Spread across 46 acres, and surrounded by lushness, 46 Banyan Tree is a PMRDA approved secured gated community living with residential villa plots ranging from 3,600-6,000 sq. ft., with each plot having an FSI of 1.5 with ready drinking water and electricity connection.

It is located in Chandkhed near Hinjewadi on a proposed 200 ft. road which connects Hinjewadi to the Mumbai-Pune Expressway.

Crafted by one of New Zealand's most renowned architects, the project boasts of vast open spaces, expansive greenery, and amenities of world-class quality.

Come, and experience a life that is truly pristine in every way.



Architectural rendition of Entrance.

PROJECT HIGHLIGHTS

Live amidst utmost serenity and tranquillity at 46 Banyan Tree, where every element has been designed to promote a wonderful and a nature-friendly lifestyle.

- Pristine and secured gated community
- Plot FSI of 1.5
- Internal concrete roads lined with trees on both the sides
- Electricity connection provided to every plot
- Advanced water treatment plant
- Entrance plaza with security
- Over 4 acres vast open spaces
- Central Open Space equipped with variety of activities for health and entertainment, such as barbecue zones, yoga zone, outdoor chess arena, and children's play area
- Clubhouse spread over an area of 10,000 sq. ft. containing gymnasium, society office, multipurpose hall, and other activity centres
- Organic farms and gardens to indulge in nature conservation activities
- LED streetlights lining the walkways
- Sustainable groundwater recharge pits
- Multipurpose sports court & 3 km jogging track



Architectural rendition of Internal Roads.

YOUR OWN PARADISE

Live in a world where nature and modernity co-exist in an ideal symbiotic relationship. Here, the polished concrete roads are canopied by lush green trees on both its sides, and each road is lined with a different type of tree so as to put a spotlight on the beauty of diversity nature provides us with. Additionally, 46 Banyan Tree is full of nature's wonders, with various species of fruiting and flowering trees decorating every corner of this paradise.

The groundwater recharge pits add a charm to our goal of making this community conservation-friendly. You can also get a chance to explore the various forms of conservational activities, such as organic farming, and admire the ecological wonders such as the specially preserved natural bioswale where you can spend your leisure time in absolute tranquility.



Architectural rendition of Multipurpose Court.

THE CENTRE OF ENTERTAINMENT

Enhance your living experience with the various activities available at the Central Open Space, such as the amphitheatre where you can celebrate the spirit of your community, impeccable barbecue stations and piazzas for a perfect weekend brunch, an outdoor chess arena for the ultimate battle of wits, a yoga zone that is perfect for your morning meditations, and calming lush lawns which are not only the perfect meetings zones, but also a great place to relax.

The Central Open Space at 46 Banyan Tree is where the community comes together to celebrate life!



YOUR WELL-BEING WISHLIST

At 46 Banyan Tree, the amenities have integrated with a diverse mix of fitness and recreational facilities, so as to give you a holistic approach to well-being of mind, body, and soul.

46 Banyan Tree offers you a range of spaces that would aid one in leading a holistic lifestyle. From serene infinity edge pool where you can refresh after a busy day, to a multipurpose court where you can challenge your friends for a match or two, there's something for everyone. Give your little ones an entertaining evening at the children's play area, spend time with your neighbours in the indoor games arena, or simply take a run on the jogging track.

At 46 Banyan Tree, your well-being is not simply an additive, but the very essence of your life.

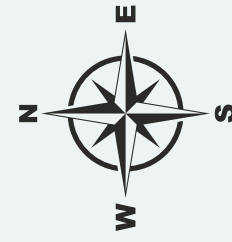
A modern clubhouse building with a swimming pool and lounge area. The clubhouse has a two-story design with a stone base and a wooden slat upper level. A large swimming pool with a waterfall edge is in the foreground. The area is landscaped with palm trees and other greenery. The sky is clear and blue.

Recreation Within Your Reach

RECREATION WITHIN YOUR REACH

The clubhouse at 46 Banyan Tree is a home to both the prolific amenities, and activities that boost community living.

From planning your gym schedule, to organizing big and small events, the clubhouse is the string that knits our community together.



46 BANYAN TREE

Site Layout

46 BANYAN TREE

CENTRAL OPEN SPACE

10 COURTYARD SPACES
BARBEQUE STATIONS
WITH INTERACTIVE GAMES
& SEATING AREAS

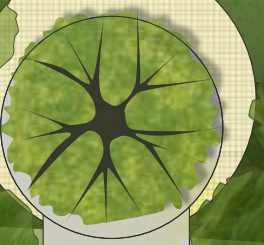
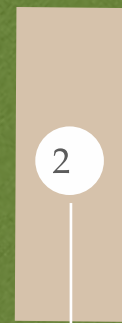
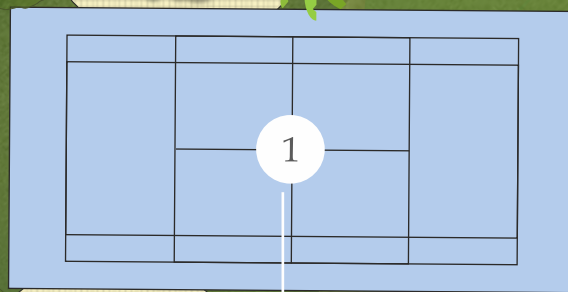
VEHICLE FREE
KID'S PLAY ZONE

SWIMMING POOL &
KID'S POOL WITH DECK AREA

TWO CLUB HOUSE WITH GUEST ROOMS,
INDOOR GYM, INDOOR GAMES,
INDOOR MULTIPURPOSE HALL

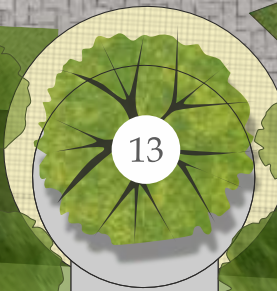
LAWN TERRACES

YOGA AND
MEDITATION ZONE



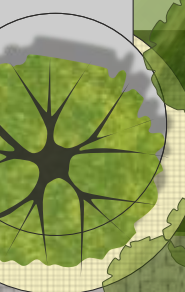
CHILDREN'S
PLAY AREA

MULTIPURPOSE SPORTS COURT



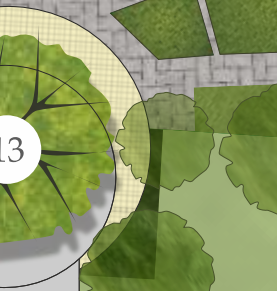
13

AMPHITHEATRE

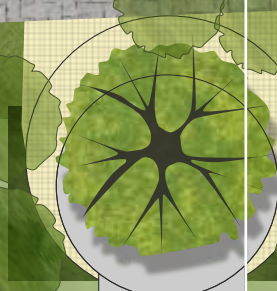


4

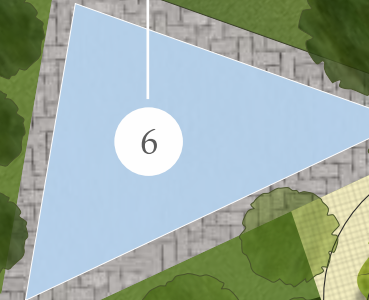
AMPHITHEATRE STAGE



3

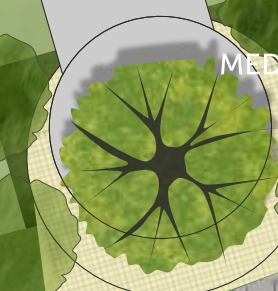


5



6

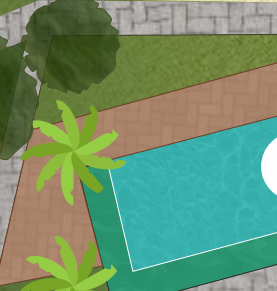
7



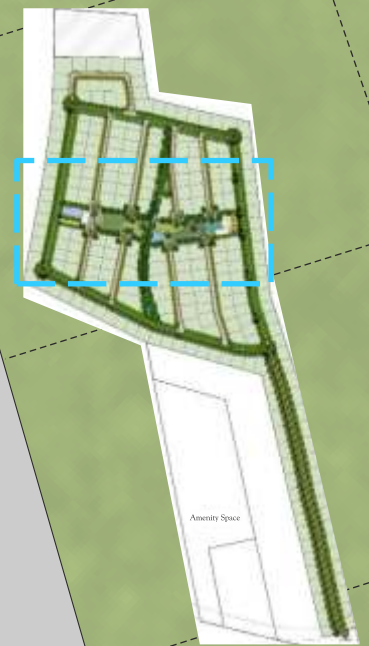
LAWN TERRACES

YOGA AND
MEDITATION ZONE

8



9



10

Amphitheatre

LOCATION MAP

46 Banyan Tree is located in Chandkhed, a fast-developing area located about 12 kilometers away from Hinjewadi. The location of the project makes it easily accessible to areas of prime interests such as the Pune-Mumbai Expressway, Hinjewadi IT Park, and various schools and hospitals.



Connectivity

Mumbai-Pune Expressway
8 Kms away

Wakad
13 Kms away

IT Park Hinjewadi
12 Kms away

University Circle
25 Kms away

Somatane Phata
12 Kms away

+ Hospitals

Pawana Hospital
Ayushree Hospital

📖 Schools / Universities

BoB- Priman International School (BPIS)
Kirloskar Institute of Management Studies
Indira Global Business School
AIMS Institute of Management Studies

